

Commission documents and execution  
documents (technical sheet) of  
"Artifacts for The Message -  
Early Warning System #1 /  
Time-Capsule:Kharon's Obol (2012)"  
assignment for Mr. LAURI WUOLIO

this dokument also online  
[http://oree.storijapan.net/praxis/the\\_message](http://oree.storijapan.net/praxis/the_message)

more on subject (especially Kharon.s Obol)  
<http://www.wuolio.fi/projects/kharons-obol>

Commissioned craftsperson LAURI WUOLIO

Mr. Lauri Wuolio (b.-84, Jyväskylä) is commissioned by Ore.e Refineria (Ore.e Ref.) to craft and/or select items for a time-capsule to be embedded behind the "The Message - Early Warning System #1" (EWS1). The EWS1 is a navigational instrument, forged out of CRES (corrosion-resistant steel / 1,5cm thick and 15x10cm of size) which is to be installed, in a hidden location in the seashore of Helsinki, Finland in 2012 Common Era/CE(MMXII)

#### COMMISSION: Artifacts for EWS1 / Time-Capsule

Mr. Wuolio is commissioned to craft and/or select item(s) which depict contemporary times in an inspiring manner. Item(s) will be contained in a capsule which maximum capacity is 8cmX38mm~~90~~. The container will be mounted into the bedrock of Helsinki region or a selected granite boulder etc. geology suitable material, which is expected to remain stationary until the next ice-age (-4000-20000CE). The items will be protected by a birch bark capsule provided by Ore.e Ref. and the capsule will be placed behind the EWS1. Hence the time-capsule and artifacts in it will be protected from physical stress and climatical changes from all directions and are expected to remain secured until the EWS1 suffers physical damage caused by human activity and/or extreme climatical changes. Or unexpected material/structural flaws.

Ore.e Ref. places NO demands on the design or endurance of the artifacts to be placed in the time-capsule but emphasizes that artifacts in the capsule are expected to become accessible for audiences earliest 2500CE. The instrument is to be built by Ore.e Ref., Head of Technology and Design Jesse Sipola and is estimated to stay intact on location until 2500-3000CE. Until the EWS1 is damaged it may be used by people with skills in navigation and access to maps (and knowledge on contemporary metric-and numeral system) or skills in observational astronomy (and cryptography); to find the "ONKALO" Nuclear Waste Repository being built at 61°23'54"13N 21°48'14"04E. After the instrument is damaged the capsule and its content(s) will become accessible.

#### TERMS OF RIGHTS

The commissioned craftsperson responsible for crafting/selecting content for "The Message - Early Warning System #1 / Time-Capsule is:

1. The copyright holder of all original material(s): Artifacts, concepts and related representations made by the artist or the company, which result from the processes of selection and/or construction of artifacts to be placed in the time-capsule. Artifacts contained remain under copyright according to international copyright law. The Artist has unlimited rights to use, modify and distribute all media (text, image and other) made by Ore.e Ref. which is in contextual relation to the commission.

To complete the assignment Mr. Wuolio is provided the following access to Ore.e Ref. resources.

1. Unlimited access to Ore.e Ref. facilities and tools.
  - A. Upon request Ore.e Ref. staff will provide Mr. Wuolio with technical aid, in the possible construction of artifacts.
  - B. Upon request Ore.e Ref. will provide any and all materials and technologies required in the construction/preparation/modification of artifacts.
2. Unconstrained utilization of company capital for the purchase of artifacts and/or materials used in the construction of the artifacts.

During the assignment (spring-summer 2012) Mr. Wuolio is encouraged to:

- A. Conduct himself according to the company's social and ethical policies.
- B. Document in verbal, written and means illustrated by Ore.e Ref. - D2T guidelines, steps taken to complete the assignment and to make this research accessible for contemporary audiences.

Helsinki 6.6.2012  
Eero Yli-Vakkuri  
as assigned by Ore.e Ref.



Expeditions to find a suitable site  
(with a clear view to sea in the right  
bearing) begun 20.4.2012 in Vuosaari.

A digital compass and a gps  
device was used to confirm  
location and bearing to Onkalo.

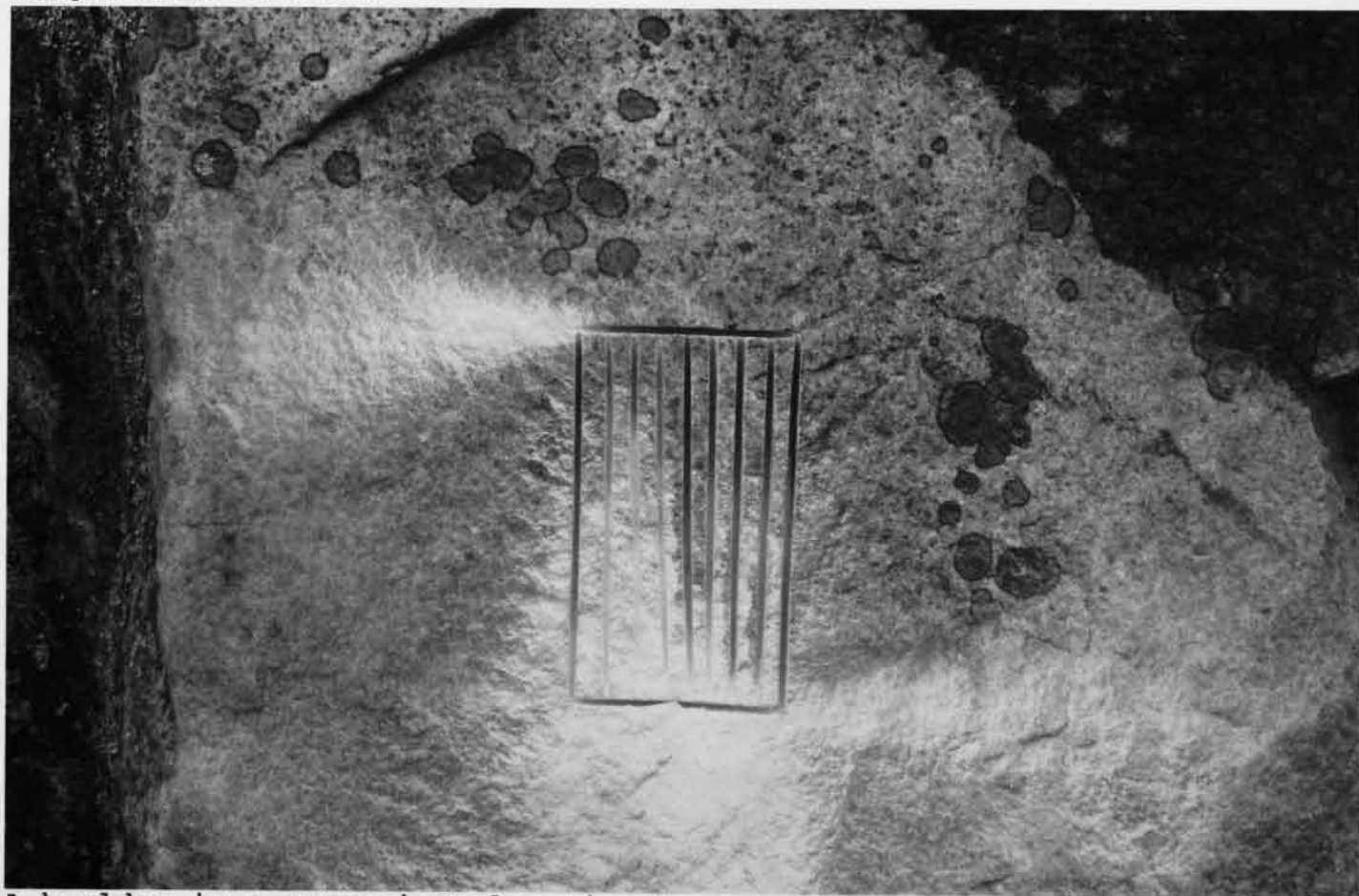


The EWS1# was forged but left unfin-  
ished. Initial rock carvings on site  
begun 26.4.2012





The selected boulder had found it's place during the last ice-age. It weight some ~5 tons.



A boulder is a convenient location to permanently install the EWS1#. It might travel with the boulder next ice-age.

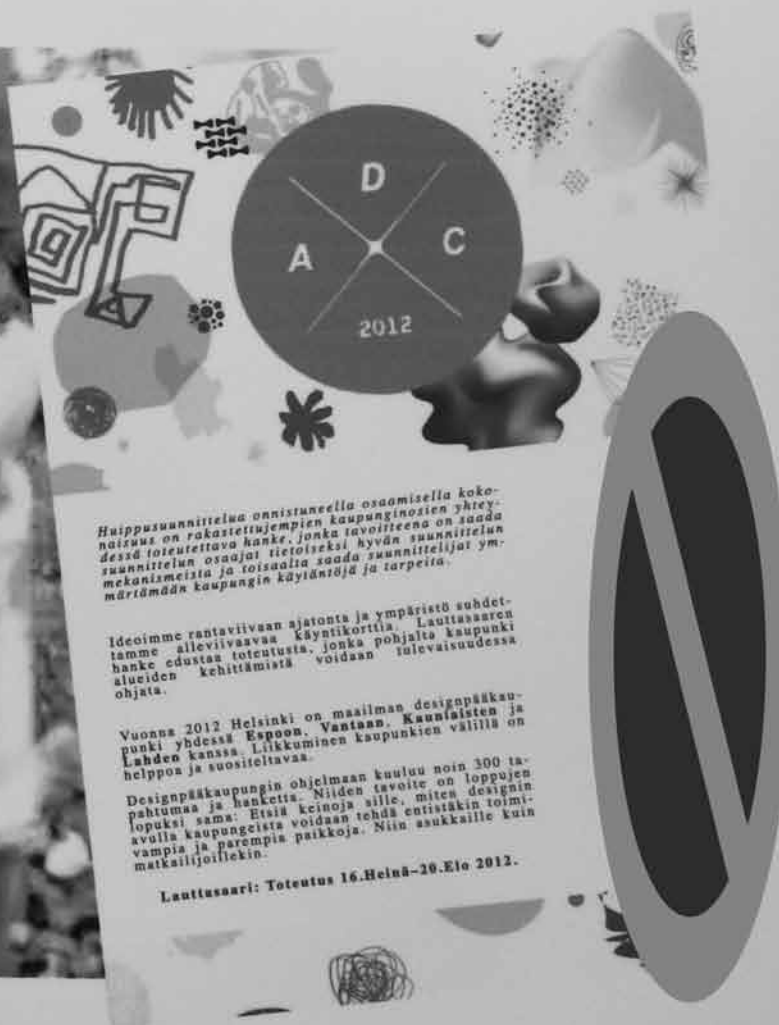




After Wuolio completed work on the "Kharon's Obol". Carving on the EWS1# site continued 16.7.2012.



A 4kw Engine-generator was used for heavy tools. A fake WDC sign, to convince people passing was used.

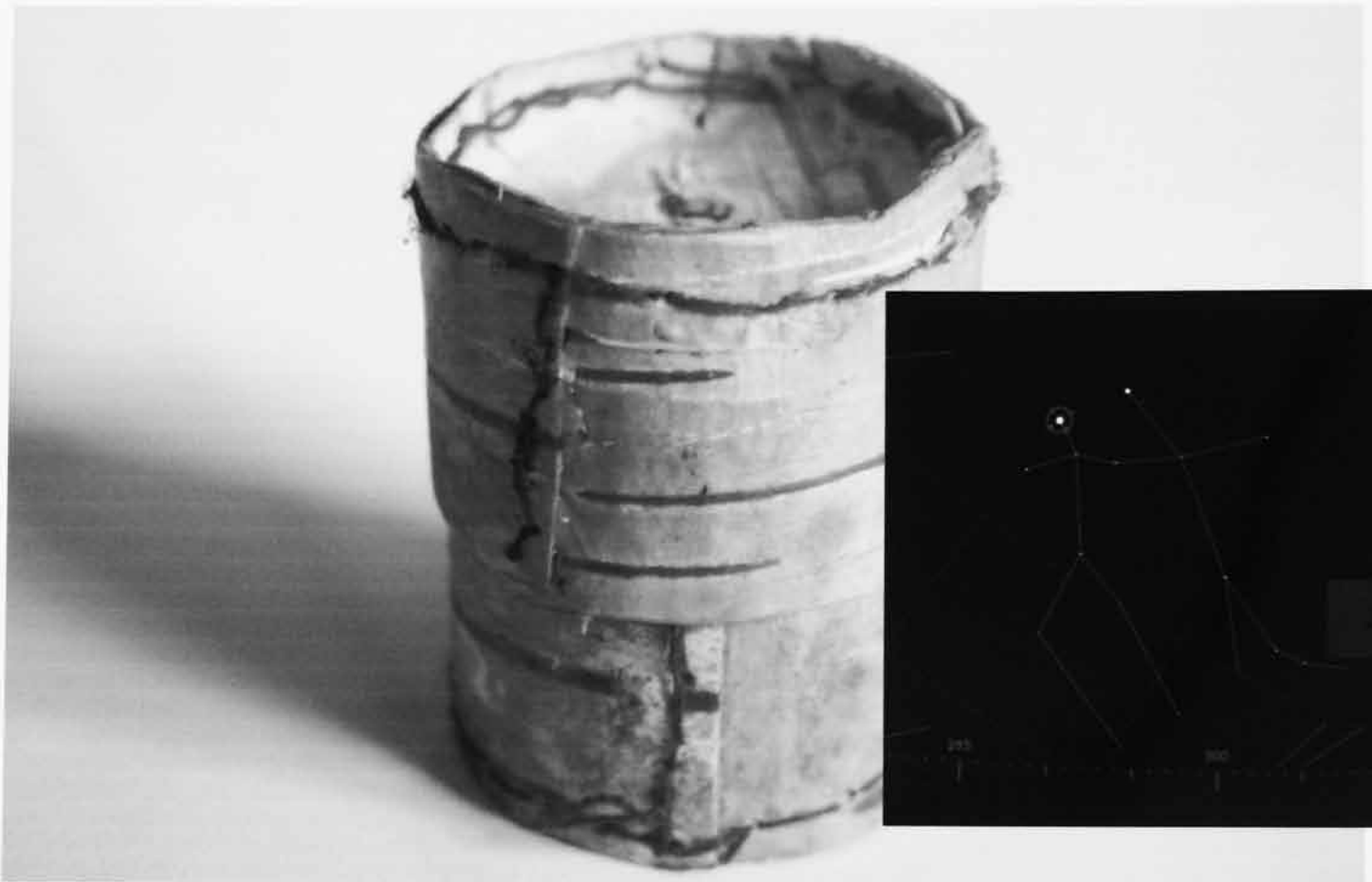




The slot for EWS1 was fitted by hand.  
Work on slot finished 3.8.2012. Some  
random faces where spotted on site.

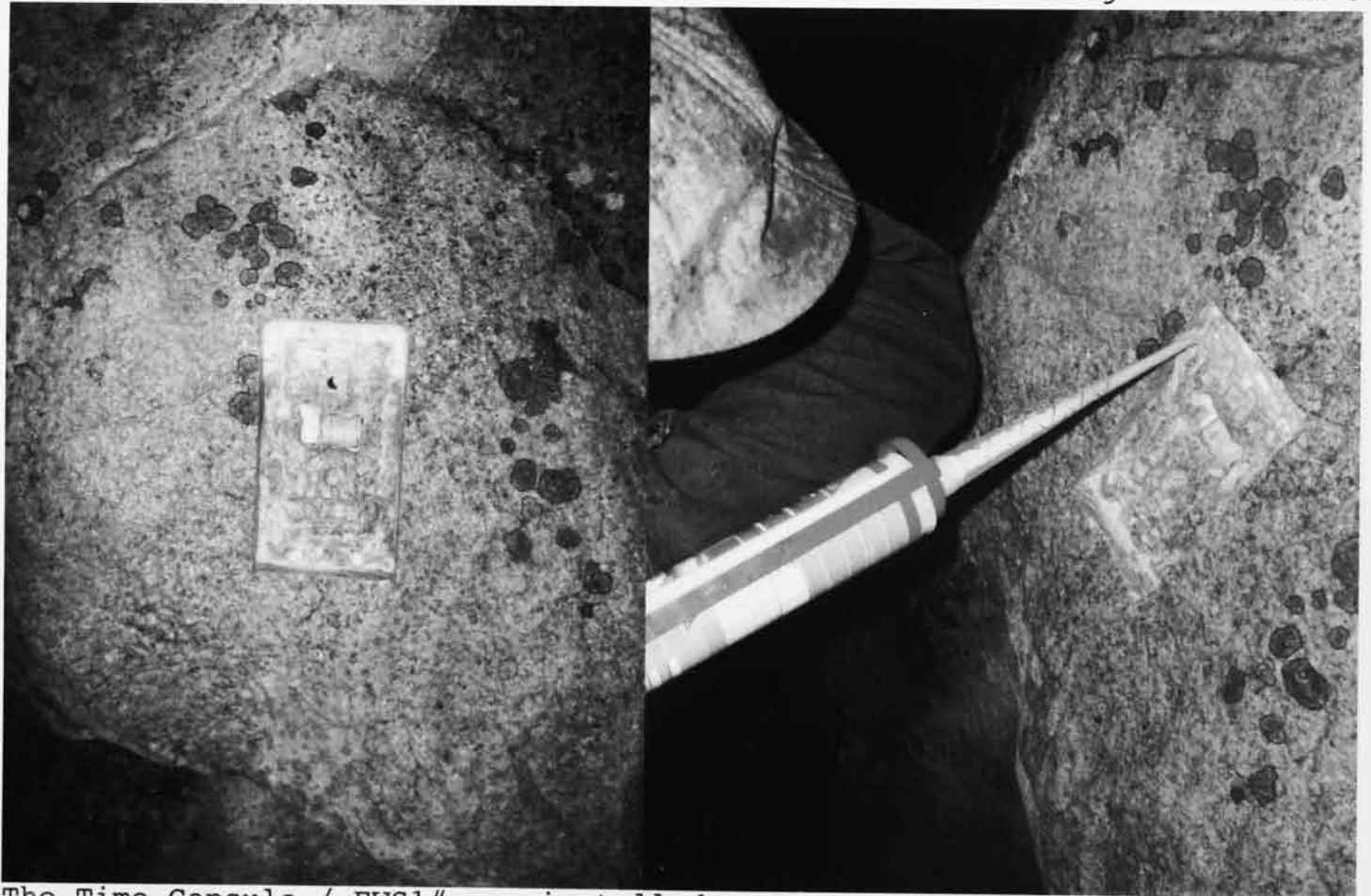


A silicone mold to copy Wuolios "Kha-  
ron's Obols" was made. Beeswax copies  
of item(s) where casted 16.8.2012



The time-capsule container was made from birch bark. Birch bark was secured with cotton yarn 16.8.2012

*Additional analys of the star signs of the site where made using Stellarium 0.11.4*



The Time-Capsule / EWS1# was installed on site 7.9.2012.



The EWS1# was fitted on site using 10mm mechanical rods (welded behind) and secured using Sika® AnchorFix®-2.

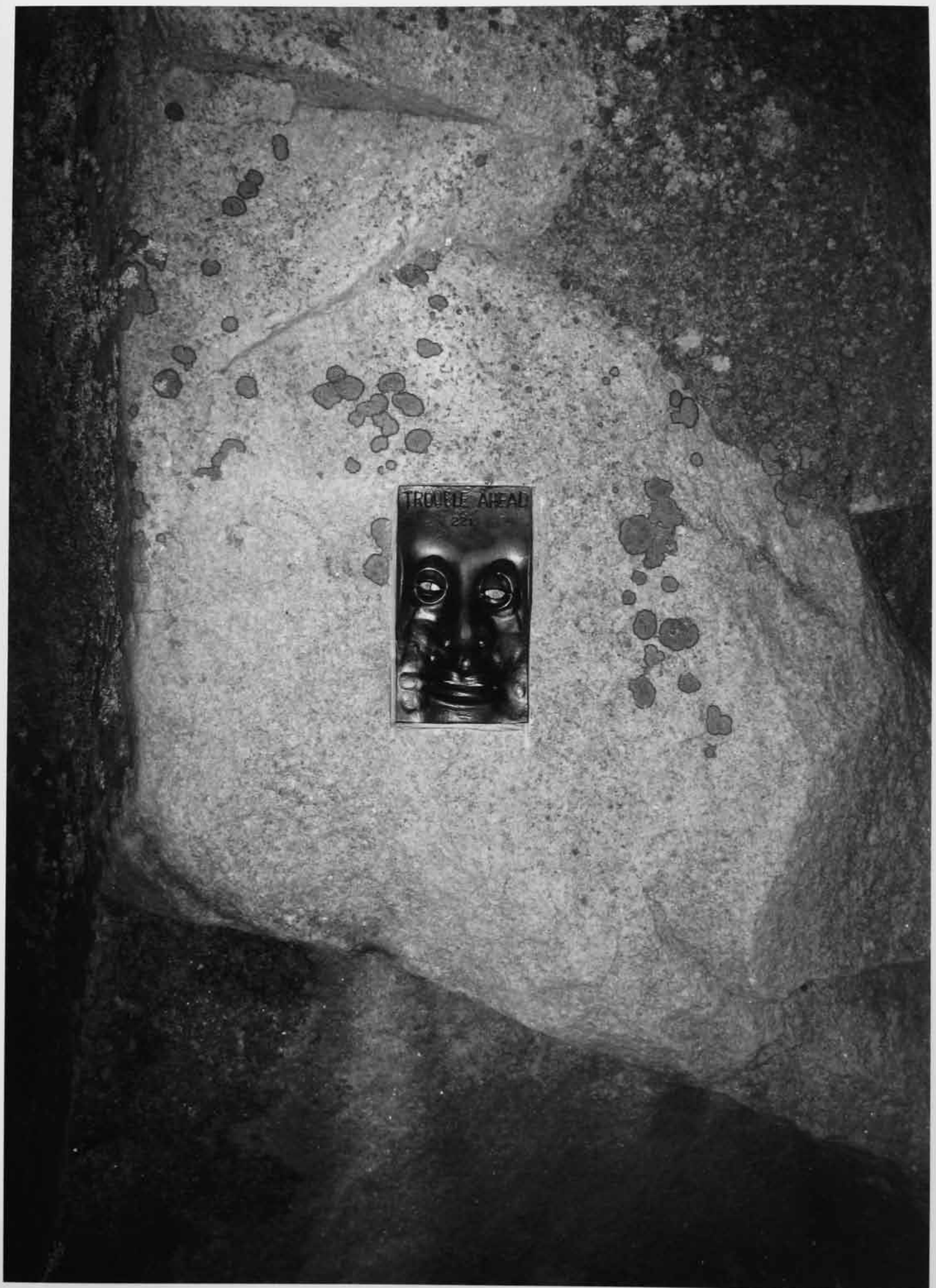


The Message - EWS1# / Time-Capsule where inspect on site and found to be in good working order.

Capsule as seen through the cavity.







The Message - Early Warning System 1# /  
Time-Capsule: Kharon's Obol (2012) by  
Lauri Wuolio.



**Teollisuuden Voima Oy: Onkalo Spent Nuclear Fuel Repository**

429 m EAST of Olkiluodontie 1352.  
27160 Eurajoki, Finland, EU.  
61.235413; 21.481404

**Ore.e Refineries: The Message - Early Warning System 1# / Time-Capsule:  
Kharon's Obol (2012) by Lauri Wuolio.**

240 m (approx. 2).

Final  
Midpoint: 60°42'06"N, 023°12'21"E

**For Geocaches:**

EWS1# is type "Virtual". Look for boulder facing South-West.  
Be prepared to get your feet wet. Upon discovery send image of  
device to eero@storijapan.net (CO). Cachers who have found the spot  
will be added to a virtual guest book at:  
[http://oree.storijapan.net/praxis/the\\_message/](http://oree.storijapan.net/praxis/the_message/)  
The location is also found on <http://opencaching.com/> (but with a  
different name). If You require the location in .gpx, .kml, .lmx,  
.asc, and .cvs formats please send an SMS request to 00358505729743

**Materials of EWS1#**

Stainless steel (corrosion-resistant steel = CRES) UNKNOWN TYPE, forged  
using handheld pneumatic jackhammers (heated in furnace). (70% likeli-  
ness the material consists of 0.15% carbon, a minimum of 16% chromium  
and sufficient nickel and/or manganese to retain an austenitic struc-  
ture at all temperatures from the cryogenic region to the melting point  
of the alloy (304 grade or A2 stainless steel). Two rods welded on in  
the back (secured to boulder trough 10mm holes filled with Sika® Anchor-  
Fix®-2), seams and entire device pickled (metal surface treatment used  
to remove impurities). The device covered in graphite paste.

**Materials in&of Time-Capsule: Kharon's Obol (2012) by Lauri Wuolio.**

Technical Sheet.

